



**2 Bed  
Flat  
located in St Pauls**



134A Ashley Road – first  
floor flat  
St Pauls  
Bristol  
BS6 5PA



## £1,350 Per month

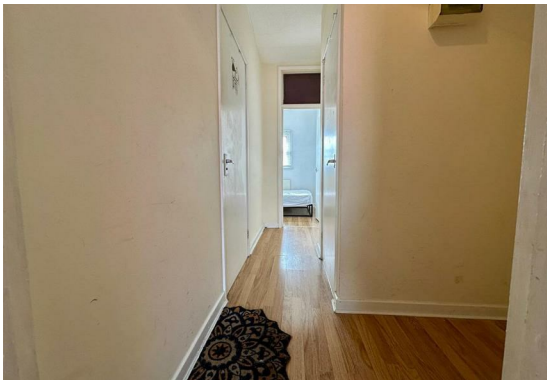
Situated on Ashley Road in the vibrant St Pauls area, this redecorated first-floor, two bedroom flat. This flat is just around the corner with shops, cafés and Bristol's nightlife on your doorstep.


Perfect for University of Bristol students looking to share a flat, or a couple working in Bristol.

The flat has recently been updated and benefits from a brand new kitchen, complete with white goods to make moving in simple. It comes semi-furnished, giving you the flexibility to make the space your own while still having the essentials ready. Both bedrooms come with a standard double bed and storage, making it an ideal flat for two students sharing.

Available now, this property offers great value in a sought-after location – perfect for those who want a comfortable base with everything Bristol has to offer close by.

Available - 6th July  
Council Tax - A  
EPC - D  
Gas



Energy Efficiency Rating		
	Current	Potential
<i>Very energy efficient - lower running costs</i>		
(92 plus) <b>A</b>		
(81-91) <b>B</b>		
(69-80) <b>C</b>		
(55-68) <b>D</b>		
(39-54) <b>E</b>		
(21-38) <b>F</b>		
(1-20) <b>G</b>		
<i>Not energy efficient - higher running costs</i>		
<b>England &amp; Wales</b>	EU Directive 2002/91/EC	

## DIRECTIONS

### CONTACT

Shore House Westbury Hill  
Westbury-on Trym, Bristol  
BS9 3AA

E: [elliott.sherwood@frontdoorlettings.co.uk](mailto:elliott.sherwood@frontdoorlettings.co.uk)

T: 0117 457 8577

[frontdoorlettings.co.uk](http://frontdoorlettings.co.uk)

